

HELI

Li-ion & LION

CPD60/70/85/100

GB2D/GB2DLI



LION 6-10 t

G3 Series Electric Battery
Forklift Truck



The truck is a continuation of Heli family style and creates a new concept of electric forklift through easy exchange between lead acid battery power and lithium battery power

Compatible in system, Special in style

----- It is rather to achieve mutual achievement
than give an ostentatious display of ability.

Compatible

Lithium battery and lead acid battery are optional as you like.

Integrated

Combine the humanization design advantages of both internal combustion forklift truck and electric truck.



Efficient and Energy saving

- Powerful dual drive, superior gradeability.



Dual drive power, imported motor and imported wheel reducer, while providing strong power, further improve the safety and stability of the truck.



Driving speed:
6-7t: **15-16km/h**
8.5-10t: **13-15.5km/h**



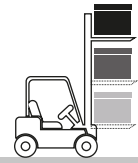
Maximum gradeability with load:
6-8.5t: **18%**
10t: **15%**



Maximum lifting speed with load:
6-7t: **0.32m/s**
8.5-10t: **0.255m/s**

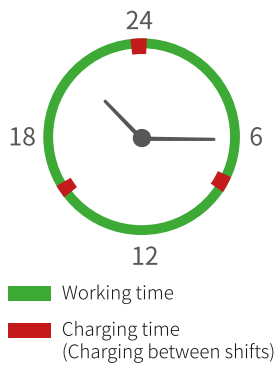


Maximum lifting speed without load: 0.46m/s
6-7t: **0.46m/s**
8.5-10t: **0.350m/s**



Good bearing capacity
at high position

- Double gun charging, fast and efficient.

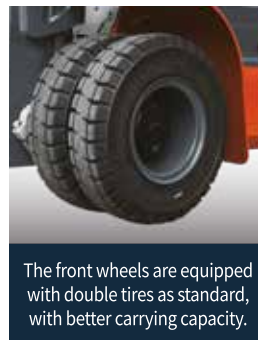
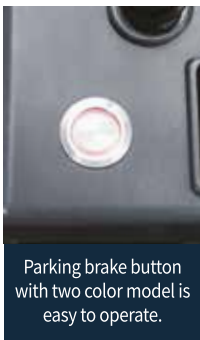


Lithium battery forklift truck is equipped with double gun charging as standard, which greatly reduces the charging time. Lithium batteries have high-density capability and can be used and charged at any time to realize efficient and continuous operation all day long.

Lithium battery options:

- 606Ah capacity (standard configuration):** which can be charged for 8 hours at one time, suitable for light load condition;
- 813Ah capacity:** one charge can meet 8-9 hours of operation, suitable for standard working conditions;
- 1084 Ah capacity:** one charge, suitable for 9-10 hours operation, suitable for heavy load strengthening conditions.
- 808Ah capacity (8.5-10t Lithium battery options):** one charge can meet 8-9 hours of operation, suitable for standard working conditions;

- Multi configuration, low energy consumption.

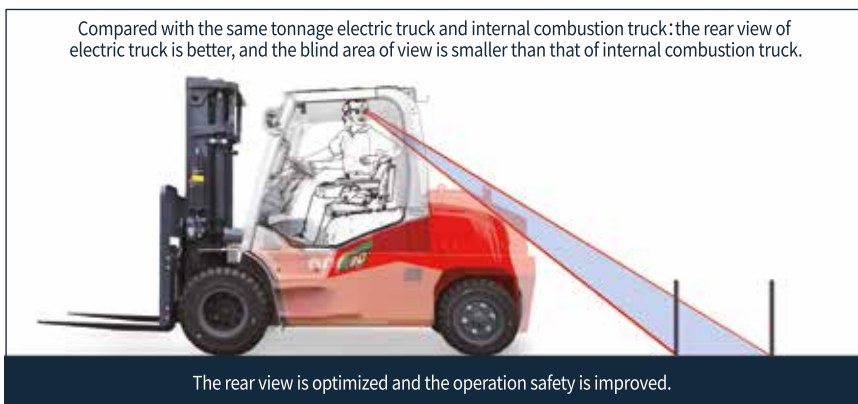
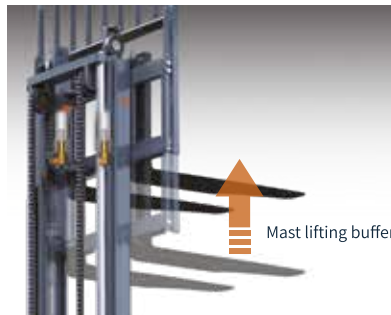
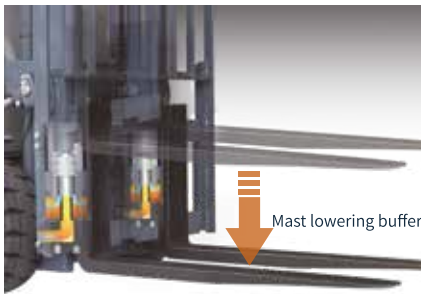
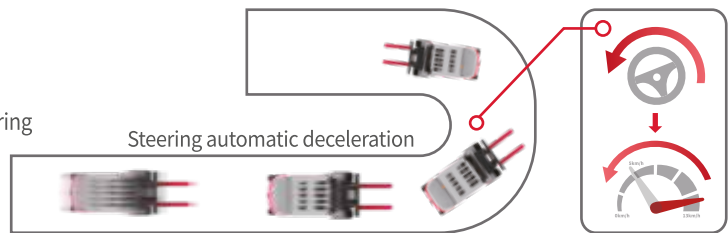




Gradient
 6-8.5t: **18%**
 10t: **15%**

Intelligent and Safe

- **Intelligent automatic parking:** optimized negative braking system and active parking in multiple applications are safe and easy which is safe and easy to make up omissions;
- **Intelligent turning speed limit:** active speed limit function, balance efficiency and safety when turning at high speed;
- **Intelligent limit buffer:** intelligent induction of mast lifting and lowering avoids limit impact and is safe and comfortable;
- **Intelligent operation protection:** a full set of OPS system can avoid misoperation and ensure safety;
- **Intelligent control strategy:** dual core controller is in line with the latest EU safety requirements.



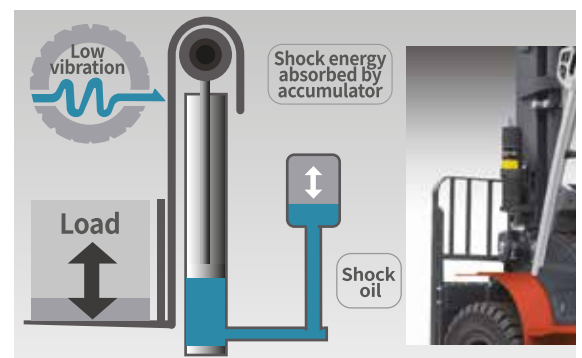
Comfort and Intimate

- The mast with large opening offers good driving vision ensuring operation comfort and safety.
- It integrates the advantages of internal combustion forklift truck platform to make the driving space more comfortable.
- Standard imported silent gear pump, greatly reduce the ear noise.

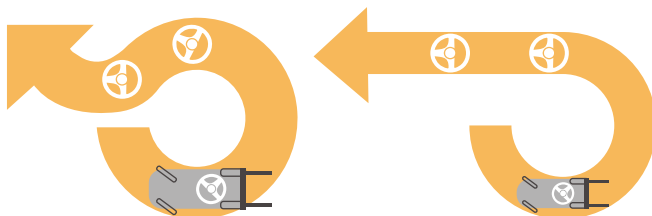


Optional configuration of intelligent safety buffer system cushion operator from effects of riding over uneven surface and it is more comfortable.

- **Vibration shock reduction**
When driving under load conditions, the impact caused by uneven surface is greatly absorbed, and the vibration is effectively reduced.
- **Vibration and noise reduction**
When driving under load condition, the impact noise caused by uneven surface is greatly reduced.
- **Reduced driving fatigue**
During the emergency stop operation during the load lowering process, the vibration and driving fatigue caused by inertia impact can be effectively reduced, and the driving safety can be improved.



- Hydraulic synchronous steering system can adjust steering wheel and wheel angle offset smartly and offers accurate steering and comfortable driving. (optional)
- Color screen display which can switch between Chinese and English, display truck speed, working time, battery power, fault code and other information.



Without synchronous control function

With synchronous control function



Stable and Reliable

- Imported drive axle and motor are stable and reliable.
- Wet negative braking is safe and reliable.
- The innovative design of mast structure improves the overall strength and stiffness.
- The structural design of the welded large oil tank greatly improves the strength of the frame and the heat dissipation of the hydraulic oil.
- The whole truck can be operated alternately in -20°C cold storage for 6 hours and parked in the cold storage for 12 hours without failure and can continue to work.
- New design of steering axle is safe and reliable.



Convenient and Maintenance

- The layout of the cab is optimized, the battery is located directly under the engine room, and the hood opening angle is large, which facilitates daily inspection and maintenance.
- The controller is located on the counterweight, giving consideration to heat dissipation and maintenance convenience.
- The battery side changing is installed for easy changing between lead-acid battery and lithium battery as you like meet the needs of different customers and occasions.



HELI smart fleet management system

Vehicle positioning

Statistical form

Remote diagnosis

Vehicle management

Remote monitoring

Identification recognition (optional)

Maintenance reminder

Weight management (optional)

Battery management

Collision management (optional)

Battery management



Driving management



Vehicle management



Smart reports forms





HELI



检测 CNAS L7096

HELI CANADA

5705, place Kubota
Drummondville (Qc)
Canada, J2B 6V4
1-833-HELICAN
info@heliforklift.ca
heliforklift.ca



Our products are subject to improvements and changes without notice.