

HELI

OPL10-S

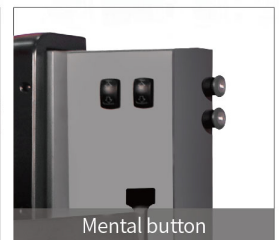
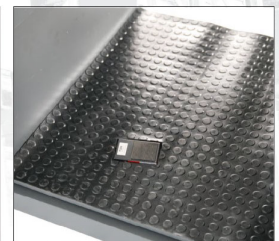
Electric Low Level Order Picker



AC / EPS

Characteristics

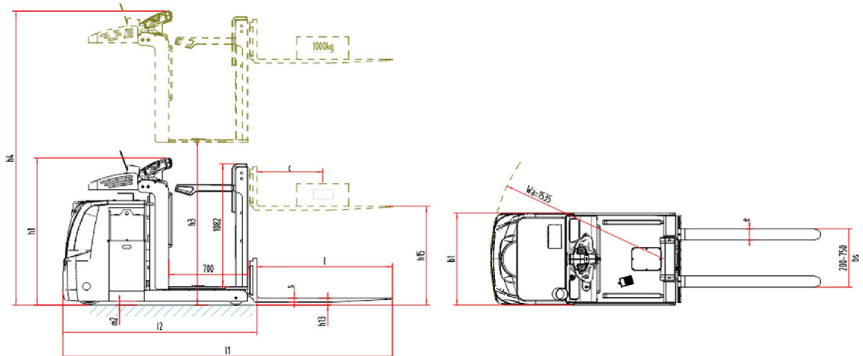
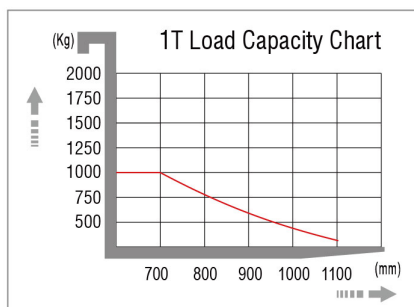
- Max. lifting height of platform is 1.2m, The capacity of loading tray is 60kg.
- Forward and backward control button located at the backrest of platform.
- Advanced electronic steering system (EPS) handle ensures effortless and highly efficient maneuverability.
- Combining of regenerative brake and electromagnetic brake provide safe and reliable brake.
- Side-way battery designs is very convenient for maintenance and replacement.
- USB charge device on the control panel which could charge phone, pad, et.
- Advanced AC control with reliable performance is adopted on the truck.
- Small turning radius and stepless speed control ensure the trucks can be used in narrow workplace.
- With reasonable layout of the key components, it is convenient to maintain.
- Standard with guardrail.



Mental button

Manufacturer's Data and Technical Characteristics

Character				
1.01	Manufacturer			HELI
1.02	Model			OPL10-S
1.03	Drive mode			Electric (battery)
1.04	Driving mode			Stand-on
1.05	Load capacity	Q	kg	1000
1.06	Load center distance	C	mm	600
1.07	Track	Y	mm	1300
Tyre				
2.01	Tyre type			Polyurethane
2.02	Wheels number,Front/rear(X=driven wheels)			1x/2
2.03	Track Width,rear	b11	mm	700
2.04	Wheel size, front		mm	φ250×80
2.05	Wheel size, rear		mm	φ128×73
Dimension				
3.01	Height, mast lowered	h1	mm	1300
3.02	Lift height of platform	h3	mm	1200
3.03	Height, mast extended	h4	mm	2360
3.04	Height, fork lift	h15	mm	800
3.05	Height, fork lowered	h13	mm	70
3.06	Overall length	l1	mm	2790
3.07	Length to shank of forks	l2	mm	1720
3.08	Overall width	b1	mm	812
3.09	Fork size	s/e/l	mm	35×100×1070
3.10	Width across forks	b5	mm	200-750
3.11	Underground clearance at center of wheel base	m2	mm	35
3.12	Aisle width with pallet 1000x1200 (1200 refers to the pallet width across the fork)	Ast	mm	3157
3.13	Aisle width with pallet 800x1200 (800 refers to the pallet width along the fork)	Ast	mm	3178
3.14	Turning radius	Wa	mm	1535
Performance				
4.01	Travelling speed,laden/unladen		km/h	7.7/7.8
4.02	Lifting speed,laden/unladen		m/s	0.1/0.15
4.03	Lowering speed,laden/unladen		m/s	0.07/0.08
4.04	Gradeability,laden/unladen		%	8/15
Electrical configuration				
5.01	Drive moter power		kw	1.5
5.02	Lifting moter power		kw	2.2
5.04	Battery capacity		V/Ah	24/450
5.05	Battery dimensions l/w/h		mm	654x305x705
5.06	Controller			CURTIS
5.07	Brake			Electromagnetic brake
Weight				
6.01	Total weight(with battery)		kg	1650
6.02	Axle load, front/rear axle, laden		kg	944/706
6.03	Axle load, front/rear axle, unladen		kg	500/2150



Design&Print:Fokeli Printing 20200818



HELI CANADA
 5705, place Kubota
 Drummondville (Qc)
 Canada, J2B 6V4
 1-833-HELICAN
 info@heliforklift.ca
 heliforklift.ca

