

HELI

CBS10J-K/CBS12J-K Semi-electric pallet stacker

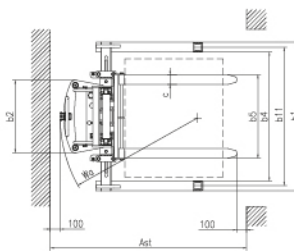
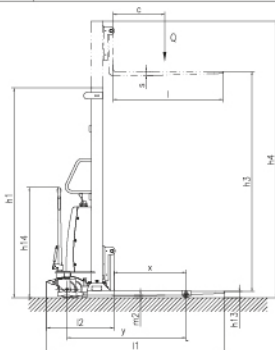
Characteristics:

1. The hydraulic power unit has a compact structure, sensitive response and its main parts of the system generally come from well-known global suppliers.
2. The imported motor relay has quick response, excellent contact performance, and long life expectancy.
3. High quality hydraulic oil cylinder and circuit system ensures stable and reliable operation.
4. TONGYI battery.
5. External positioned charger has better cooling performance and avoids the damage caused by the vibration when operating the truck with internal positioned one.
6. Aviation plug, which is used to connect charger and battery, is easy to operate, safe and durable.
7. Emergency power-off button cuts off the power in case of emergency.
8. Adjustable wide leg is suitable for different sizes of pallets and it is safer and more reliable.



Manufacturer's Data and Design Characteristics

Characteristics													
1.01	Manufacturer	HELI											
1.02	Model	CBS10J-K					CBS12J-K						
1.03	Operation	Handle											
1.04	Rated traction weight	Q (kg)	1000					1200					
1.05	Mast type	Single mast	2-Stage STD				Single mast	2-Stage STD					
1.06	Lift	h3 (mm)	1600	2000	2500	3000	3500	1600	2000	2500	3000	3500	
1.07	Capacity at highest height	kg	1000	950	800	650	500	1200	1050	900	750	600	
1.08	Service weight with battery	kg	435	485	494	500	525	440	494	505	515	535	
1.09	Load centre	c (mm)	600										
1.10	Axle centre to fork face	x (mm)	758	753				758	753				
1.11	Wheel base	y (mm)	1245										
Wheels													
2.01	Wheels type	Nylon/polyurethane											
2.02	Driving wheel size	Φ×w(mm)	Φ180×50										
2.03	Bearing wheel size	Φ×w(mm)	Φ74×70										
2.04	Additional wheels (dimensions)	Φ×w(mm)	Φ180×50										
2.05	Wheels, number front/rear (x = driven)	1, 1/2											
Dimensions													
3.01	Height of mast, lowered	h1 (mm)	2146	1646	1896	2146	2396	2146	1646	1896	2146	2396	
3.02	Height of mast, extended	h4 (mm)	2146	2616	3116	3616	4116	2146	2616	3116	3616	4116	
3.03	Fork Height, Lowered	h13 (mm)	60										
3.04	Overall length	l1 (mm)	1855										
3.05	Length to fork face	l2 (mm)	700										
3.06	Overall width	b1 (mm)	1100-1500										
3.07	Fork dimensions	e/l (mm)	35/100/1150										
3.08	Width of forks	b5 (mm)	220-850										
3.09	Min.Ground clearance	m2 (mm)	32										
3.10	Aisle width with pallet 1000 x 1200 across forks	Ast (mm)	2354-2450										
3.11	Aisle width with pallet 800 x 1200 along forks	Ast (mm)	2308-2450										
3.12	Min.Turning radius	Wa (mm)	1492										
Performance													
4.01	Lifting speed, with/without load	(mm/s)	78/145	76/143				78/145	76/143				
4.02	Lowering speed, with/without load	(mm/s)	123/107	104/93				127/111	108/97				
4.03	Service brake	Machinery											
Drive and Battery													
5.01	Lift motor rating at S3 15%	(kW)	1.6										
5.02	Battery according to DIN 43531/35/36A,B,C,no	no											
5.03	Battery voltage/rated capacity	(V/Ah)	12/120										
5.04	Battery weight (± 5%)	(kg)	36										
Others													
6.01	Noise level at operator's ear	(dB(A))	≤70										



ANHUI HELI CO., LTD.

Add / No.668, FangXing Street, Hefei, P.R. China
Post Code / 230000

Customer Service Hotline / 4001-600761

Service Tel / +86-511-63639068,63639258,63639358